



BETWEEN the TWO RIVERS

Your opportunity to make a positive impact on local land and water Secure a \$15k grant for your group

Between the Two Rivers is making grants of up to \$15K (GST excl) available to groups of landholders for demonstration projects in subcatchments in the area.

The purpose is to give farmers and growers an opportunity to get together to:

- tackle issues of common interest
- test drive innovative solutions
- tailor solutions to local conditions
- identify issues and potential mitigations in a watershed to improve water health

Criteria

1. Do we learn more than we know now? Can the project help farmers in the B2R area learn about different ways to manage land use challenges?
2. Are there clear outcomes from the activity?
3. Can it be done again? Can the project can be replicated cost-effectively?
4. Can the project be communicated to the wider community (e.g., open days, video)
5. Is it achievable within 6-12 months?

What landholders in other catchments have done

Catchment analysis for targeted mitigation

- **Erosion control and silt retention:** Mapping local geology and critical erosion areas and a stream survey to target mitigation trials (Mangarara)
- **Catchment assessment** to highlight critical points and areas for targeted mitigation measures (Makara)
- **Baseline, horizontal river survey** showing key aspects including land-use, planting, erosion, flooding issues, hydrology etc (Makaretu)
- **Collective learning and high-level assessment of current issues and potential future risks to a river-stretch:** Intergenerational knowledge interviews to capture experiences and ideas; assessment of out-of-scheme river management (Lower Tukituki Corridor)

Grants are available for landholders in these subcatchments (see map on page 3):

Kikowhero 🍷 Ngaruroro Corridor 🍷 Ōhiwia 🍷 Omahaki 🍷 Ōtakarara 🍷 Ōtamauri 🍷 Tutaekurī corridor
🍷 Tutaekurī-Waimate 🍷 Upper Tutaekurī 🍷 Waikonini 🍷 Waitio

More examples of how landholders in other catchments got involved:

On-Farm Mitigation

- Testing the effectiveness of sediment traps on 3 farms (King Country)
- Riparian planting and signage project: educating and promoting awareness and working with Silver Fern Farms and a local school (Pōrangahau, Maharakeke)
- Rethinking riparian planting - best practice following willow removal: Site visit with a panel of experts to provide practical advice on best approach to riparian planting and management (Mangamahaki)
- Piloting cost-effective native restoration with the Tīmata Method (King Country)

Plant pest management

- Cow cress/water celery control: a multi-pronged approach including organic solutions and a trial of planting for shade (Kahahakuri)
- Old Man's Beard management trial (Tukipo)
- Willow and shingle island management across nine hectares of invasive willows growing in the river channel (Upper Tukituki)

Economic benefits of land management

- Cost benefit report on best use of poplars at the end of their useful life: Information and education on poplar plantings and how old poplars can be processed for on-farm use (Hawea)
- Getting the community involved
- Community engagement through two primary kura (Papanui)

Taking care of the logistics and admin

We know farmers are short on time and B2R will support these projects with:

- Logistics
- Administration
- Communications

The funds will be kept in the B2R bank account so we can keep track of spending and pay invoices related to the project.

For more information, talk to:

Ainsley Harte

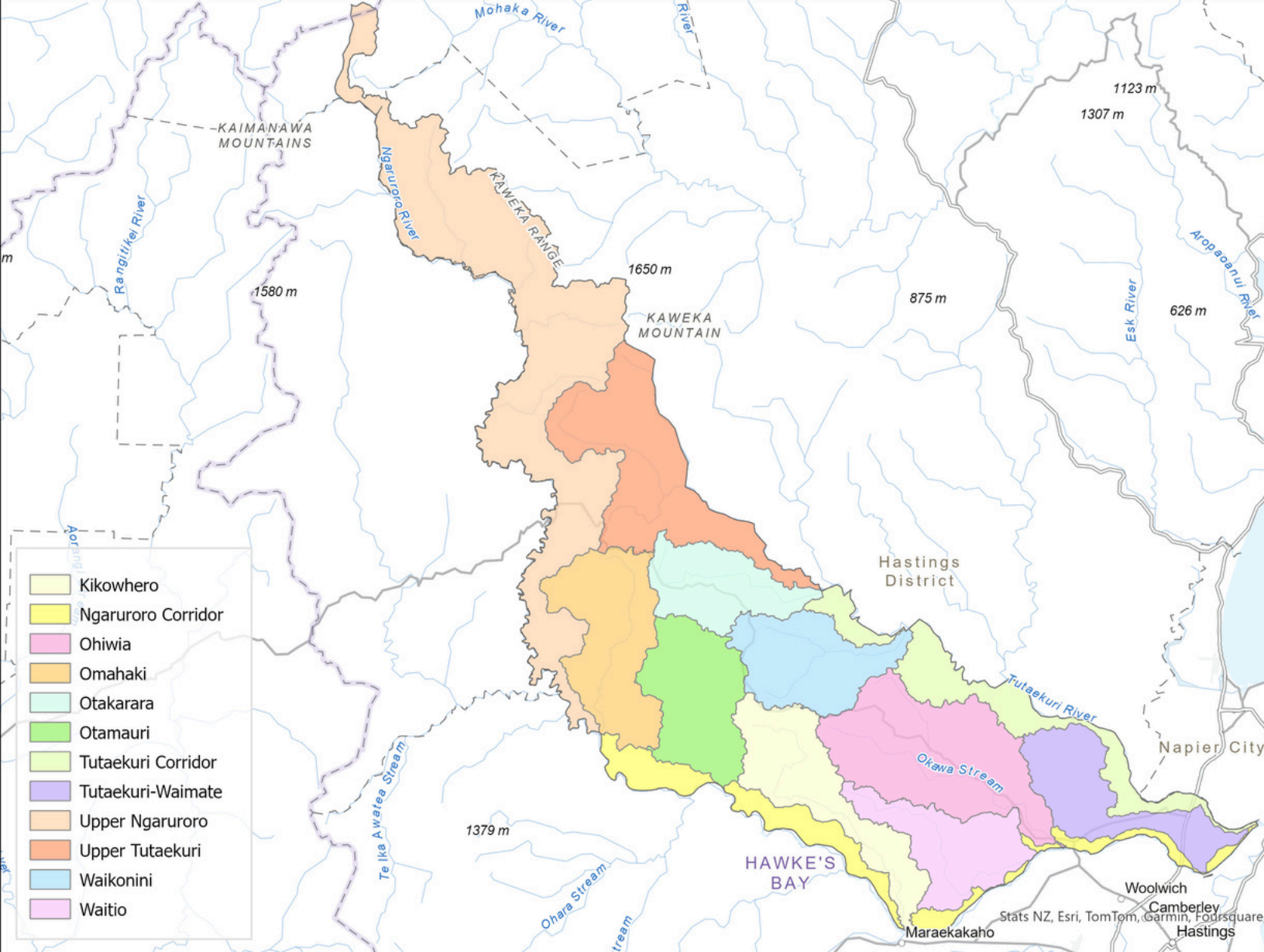
B2R Upper Catchment Coordinator

027 228 8138

ainsley.harte@hotmail.com

**BETWEEN
the TWO
RIVERS**

To the subcatchment map ↓



Please note, if you fall under one of the catchments below, the boundaries are yet to be confirmed. However, we still want to hear from you!

- Ngaruroro Corridor
- Tutaekurī corridor
- Tutaekurī-Waimate